

## Available now!

The **Geographe Catchment Companion** is an excellent tool for improving land management on your property. This landcare manual provides practical information about:

- ♦ **bush and biodiversity**
- ♦ **revegetation techniques**
- ♦ **managing pests and weeds**
- ♦ **working with water**
- ♦ **property planning and management**
- ♦ **monitoring and evaluation**

The ring-bound format allows for future additions and updates, which GeoCatch will send to you.

Copies are available now for \$10.00 from the GeoCatch Network Centre.

Unit 1A 72 Duchess Street,  
Busselton. Ph 9781 0111



# catchment companion



GeoCatch

## Introduction

The Geographe Catchment Council (GeoCatch), the Shire of Busselton and the Department of Water are pleased to present the Geographe Catchment Companion. The Catchment Companion is an information resource kit for landholders and landcare practitioners, providing practical advice for those undertaking rivercare and bushcare projects and for improving land management activities in the Geographe Bay Catchment.

The Geographe Bay Catchment contains many important natural assets which are under increasing pressures. GeoCatch's mission is *to work with the community and management agencies to manage the catchment of Geographe Bay and its marine environment so that natural systems, people and their activities coexist in a healthy, productive and sustainable way*. This mission is promoted by the Catchment Companion, building the capacity of the community to protect and enhance the natural environment.

Technical information sheets are provided, complemented by inclusion of existing publications, which cover the following topics:

- Reestablishing perennial vegetation
- Bush and biodiversity
- Pests and weeds
- Working with water
- Property planning and management
- Monitoring and evaluation

The ring-bound manual will enable new information to be added to the Geographe Catchment Companion, and GeoCatch is committed to providing up-to-date information to owners of this resource.

## Acknowledgments

As with any publication many people have contributed both directly and indirectly, from the initial concept stages through to printing and distribution of the Geographe Catchment Companion.

The Geographe Catchment Council (GeoCatch) and members of the Shire of Busselton's Environment Forum identified the need for this resource and initiated its development.

GeoCatch staff developed the concept and format of the Catchment Companion and provided ongoing support, contributions and review. This project team included Robyn Paice, Genevieve Hanran-Smith, Jenny Mitchell, Wayne O'Sullivan, Rae McPherson, Annaleisha Sullivan, John McKinney and Sasha Taylor. Special thanks are also extended to Cherie Kemp from Land for Wildlife and Kirrily White from the Cape to Cape Catchments Group for their contributions to the information sheets, and to Sietske Hunn from the Serpentine-Jarrahdale LCDC for the weed profile illustrations. Shelly Voigt, Veronica Piper and Lauren Voigt provided assistance with final stages of publication and printing process.

The community of the Geographe Catchment must also be acknowledged for their enthusiasm to become involved in land management activities and continued interest to learn and promote catchment management activities within the region.

Funding for the Geographe Catchment Companion was provided by the Shire of Busselton and the Natural Heritage Trust.



SHIRE OF  
BUSSELTON



Natural  
Heritage  
Trust

Helping Communities  
Helping Australia



DEPARTMENT  
OF WATER

# catchment companion



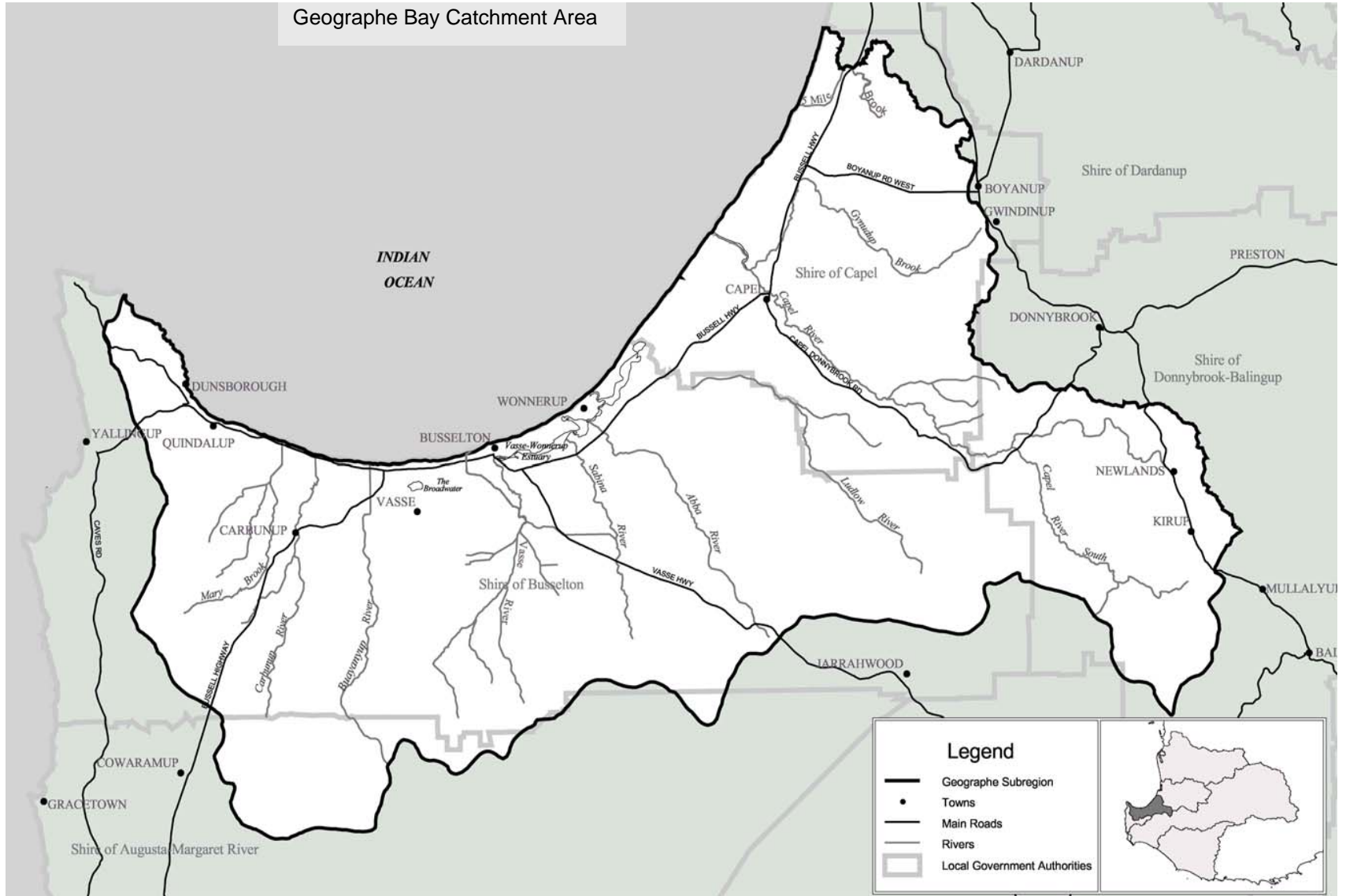
GeoCatch



SHIRE OF  
BUSSELTON



Natural  
Heritage  
Trust  
*Helping Communities  
Helping Australia*



# catchment companion



GeoCatch

## Table of Contents - Geographe Catchment Companion

### 1 Reestablishing Perennial Vegetation

- Planning and site preparation for successful revegetation
- Weed control for successful revegetation
- Seed collection
- Seed production areas and seed orchards
- Planting
- Development of corridors for linking remnant bush
- Site assessment for successful revegetation, Farmnote 36/98
- Site preparation for successful revegetation, Farmnote 37/98
- Direct seeding of native plants for revegetation, Farmnote 40/98



SHIRE OF  
BUSSELTON

### 2 Bush and biodiversity

- Managing your Bush
- Bush Regeneration
- Shire of Busselton Biodiversity Incentives Strategy
- Conservation Covenants
- Fire and Bushland Management
- Phytophthora Dieback Disease

#### *Local Fauna Profiles;*

- Brushtail Possum
- Western Ringtail Possum
- Rare and Endangered Western Ringtail Possum of Busselton – F.A.W.N.A. information note
- Pygmy Possum
- Honey Possum
- Brush-tailed Phascogale
- Quenda or Southern Brown Bandicoot
- Chuditch
- Dunnart
- Western Brush Wallaby
- Western Grey Kangaroo
- Short-beaked Echidna
- Water Rat
- Reptiles of the South West Area
- Conserving Biodiversity Values of the Abba Plains - brochure
- The Value and Benefits of Healthy Farm Bush, Farmnote 141/2000
- Species list for the Abba Plains



Helping Communities  
Helping Australia



Department of  
Environment

# catchment companion



GeoCatch

### 3 Pests and Weeds

- Weeds and their Control
- Weed control For Successful Revegetation for Agricultural regions with less than 600mm rainfall, Farmnote 47/98
- Declared Plants

#### *Weed Profiles;*

- Apple of Sodom
- Arum lily
- Cape Tulip
- Bridal Creeper
- Dock
- Watsonia
- Freesia
- Grass Weeds
- Weed It Out – brochure

#### *Pest Control*

- Rabbit Control
- Rabbit Warren and Harbourage Destruction, Farmnote 63/2003
- Use of Fencing to Protect Crops and Pasture from Rabbits in Bush Remnants, Farmnote 82/2002
- Options for rabbit control, Farmnote 89/2001
- Fumigation for rabbit control, Farmnote 20/2004
- Feral cat control
- Fox control
- Options for fox control, Farmnote 91/2001
- 1080 – characteristics and use, Farmnote 28/2002
- Guide to the safe use of 1080 poison, Farmnote 32/2003



SHIRE OF  
BUSSELTON

### 4 Working with Water

- Vegetation on Waterways
- Erosion Control Techniques
- Using Vegetation to Improve Dams
- Rural Drainage Services, Water Corporation brochure
- Living Streams, Water Facts 4
- Protecting Riparian Vegetation, Water Notes 10
- Rushes and Sedges, Water Notes 20
- Livestock Management; Constructing of Livestock Crossings, Water Notes 6
- Livestock management; Watering Points and Pumps, Water Notes 7
- Livestock management; Fence Location and Grazing Control, Water Notes 18
- The management and Replacement of Large Woody Debris in Waterways, Water Notes 13
- Wetlands as Waterbird Habitat, Water Notes 5
- The Effects and Management of Deciduous trees on Waterways, Water Notes 25
- Herbicide use in Wetlands, Water Notes 22



Helping Communities  
Helping Australia



Department of  
Environment

# catchment companion



## 5 Property Planning and Management

- Property Planning
- Revegetation and Wind
- Commercial Planting's
- Firebreaks
- Using Water
- Guidelines for Fertiliser Use On the Swan Coastal plain of WA, Dept of Agriculture
- Fertilisers for pastures on sandy soils of the Swan Coastal Plain, Dept of Agriculture Bulletin 4357:
- The Land is in Your Hands: A Practical Guide for Owners of small Rural Landholdings in WA
- Managing Groundwater Use, Water Facts 11
- Taking Water from Streams and Lakes, Water Facts 5



### *Environmental Defender's Office Fact Sheets*

- Fact Sheet 2: Common Law
- Fact Sheet 1: Overview of Environmental Law in Western Australia
- Fact Sheet 33: Drainage on Agricultural Land
- Fact Sheet 32: Land Degradation
- Fact Sheet 4: Development Controls
- Fact Sheet 3: Planning Laws
- Fact Sheet 22: Groundwater
- Fact Sheet 21: Rivers and Watercourses
- Fact Sheet 23: Wetlands



## 6 Monitoring and Evaluation

- Monitoring and Evaluating River Restoration Works: Water Notes 28
- Ribbons of Blue Monitoring Data Sheet

## 7 Contacts and Assistance



# catchment companion



## Readers Feedback

GeoCatch welcomes your comments on the *Geographe Catchment Companion*. Please complete this form and return it to the address below.

Name \_\_\_\_\_

Contact Details: \_\_\_\_\_

Property Location \_\_\_\_\_

Which parts of the Catchment Companion did you find most useful?

\_\_\_\_\_  
\_\_\_\_\_

Were you satisfied with the quality and presentation of the information?

\_\_\_\_\_  
\_\_\_\_\_

Do you have any suggestions regarding information for future updates of the Catchment Companion?

\_\_\_\_\_  
\_\_\_\_\_  
\_\_\_\_\_  
\_\_\_\_\_  
\_\_\_\_\_  
\_\_\_\_\_

Further comments

\_\_\_\_\_  
\_\_\_\_\_  
\_\_\_\_\_  
\_\_\_\_\_



Please send any comments or suggestions to GeoCatch, PO Box 269, Busselton WA 6280, email [geocatch@water.wa.gov.au](mailto:geocatch@water.wa.gov.au), or drop them into the GeoCatch office Unit 1a 72 Duchess St Busselton.