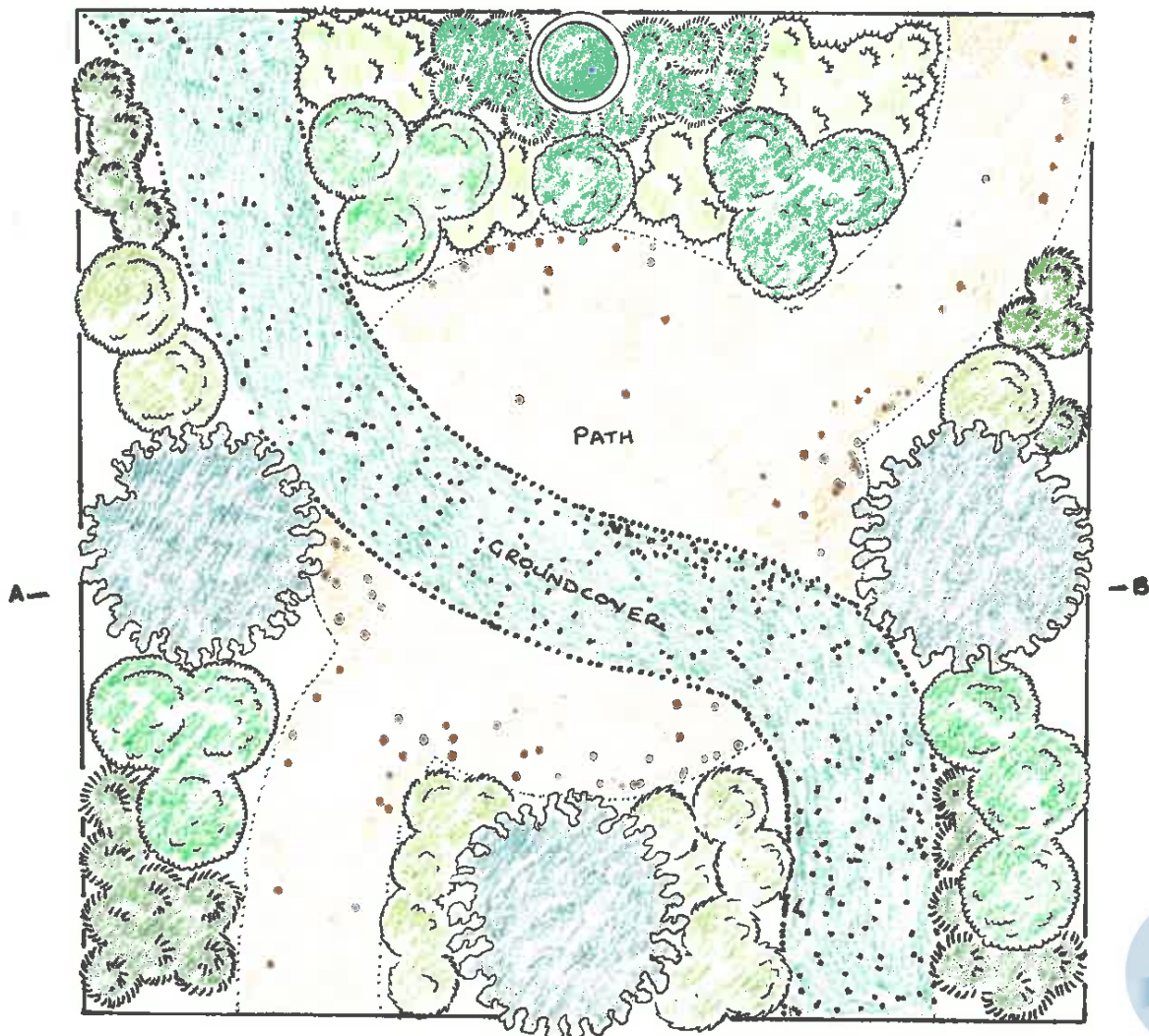
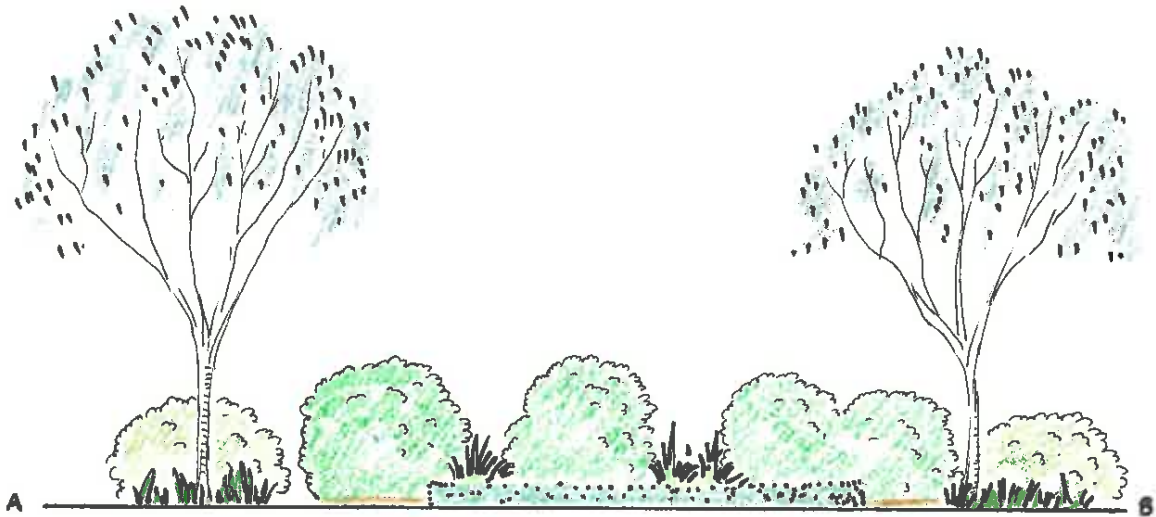




Garden Design **Kennedia**

We all love living next to beautiful Geographe Bay and its connected wetlands and estuaries. But we must protect them for the future. GeoCatch is asking gardeners to reduce their use of fertilisers and water by installing a Bay OK garden. Use this Bay OK garden design to create a garden that will help reduce the amount of nutrients entering our waterbodies and improve their water quality. Find more designs online at: geocatch.asn.au/our-work/being-bay-ok/garden/



Garden Design **Kennedia**

A garden concept for those primarily wanting a low garden. A path leads from the house to a circular viewing area and then down to the verge. This path could be constructed in limestone or pea gravel depending on the home owners' taste. A ribbon of ground cover plants intersects the gravel, visually breaking it up.

The two trees flanking the circular

paving area provide shade in summer and vertical interest to an otherwise low garden. It is envisaged that low plants would generally be used but the concept is adaptable so that the client could use taller plants around the perimeter. For the design to be effective it is recommended that the planting height is decreased towards the centre of the garden.

Recommended Plants

Trees

Corymbia ficifolia (grafted)

Corymbia erythrocoris

Melaleuca preissiana

Groundcover

Myoporum parvifolium 'Fine Leaf'

Grevillea 'Gin Gin Gem'

Kennedia laterita 'Hamelin Bay Pea'

Low Shrubs

Thryptomene saxicola

Hypocalymma cordifolium

Boronia 'Blue Waves'

Astartea 'Winter Pink'

Adenanthos cuneatus