

FIREWISE LANDSCAPES

Empowered people. Designed resilience. Safer communities.

CONTENTS

4

About Us

6

FireWise Landscapes

8

The Projects

10

Denmark *FireWise* Demo Landscape

12

Banjup Fire Station

14

Roleystone Hall

16

Acknowledgements



ABOUT US



The Forever Project is a proud local West Australian business. We're a multi-award winning organisation dedicated to inspiring and empowering community to work towards a sustainable, happy and prosperous future.

With an outstanding reputation as a leading community education organisation, that includes a team of WA's best known and most respected sustainability experts, The Forever Project has developed a position of excellence in the design, delivery and management of programs aimed at helping Government, business, community groups and individuals meet the challenges of the 21st century. To date, over 130,000 West Australian's have been through our programs and each year The Forever Project designs, delivers and manages over 120 events, making it the largest and most diverse sustainability education and empowerment program of its kind in Australia.



The Forever Project and partners building the Hawaiian's Bassendean project.



Chris Ferreira performing a demonstration on waterwise habitat gardens at the opening of the Greening Greenslade project.

FIREWISE LANDSCAPES

Climate change projections forecast a quickly drying climate in southwest WA. Fire risk is increasing and as a result, fire resilience and adaption is very likely to be a key management priority for city outskirts and rural areas.

One of the best planning practices to keep us safe in fire-prone settlements is the integration of *FireWise* principles into our landscape design. The Forever Project has pioneered designs and builds beautiful *FireWise* landscapes which effectively resist ember attack and fire creep while maintaining a cool, vegetated landscape.

We design with 5 main principles:

- 1) Fire retardant plants
- 2) Fuel load separation
- 3) Deliberate breaks (i.e. paths, access tracks)
- 4) *FireWise* mulches
- 5) Fire safe management of existing trees

The Forever Project is leading the growing interest in *FireWise* landscapes. We aim to develop our *FireWise* Landscapes across WA in key demonstration sites such as fire stations, halls and Rec Centers to promote the uptake by the community as they seek to make their spaces more fire resilient.

Our *FireWise* Landscapes can integrate educational signage, on-site demos and educational events and more, to boost learning outcomes for the community and empower community resilience.



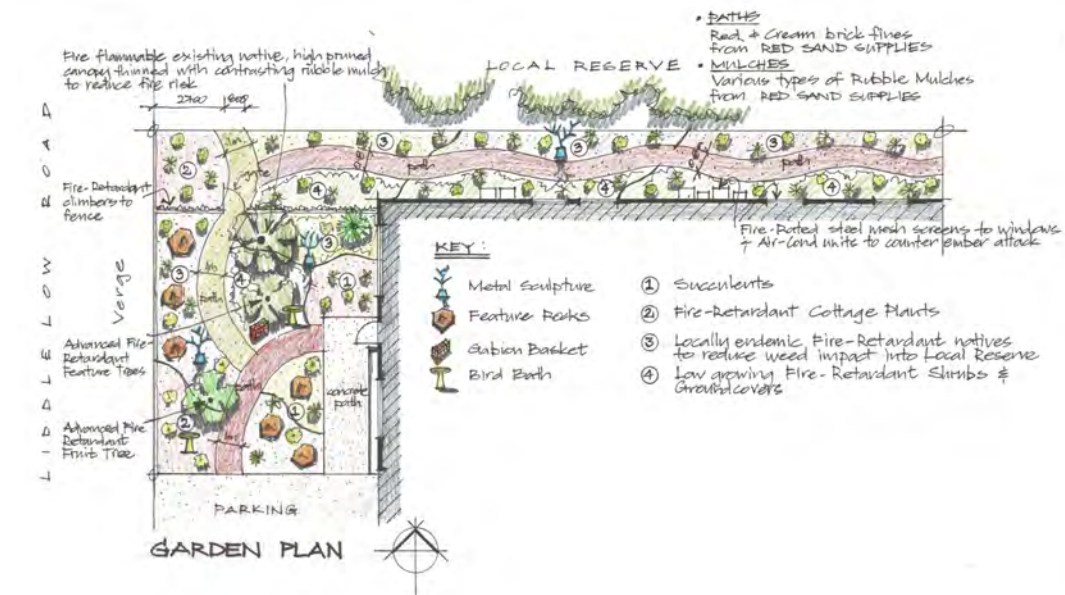
EXISTING



FIREWISE DESIGN



DEMONSTRATION SITE



Firewise Landscape Design Banjup Fire Station.



Fire retardant plant species (native & introduced)



Recycled C&D waste (for mulches, paths & gabions)



Design (separate plants with spacing & paths)



Management (pruning, removing fine fuels)

Firewise Garden Design Principles.

THE PROJECTS ▼



Denmark <i>FireWise</i> Demo	10
Banjup Fire Station	12
Roleystone Hall	14

DENMARK FIREWISE DEMO

Brokered by the Shire of Denmark, DFES and with NDRP funding this integrated program, was designed and delivered by The Forever Project. It featured workshops and bus tours and culminated in the public installation of this high profile *FireWise* Demo Garden on the main drag in Denmark. The project features *FireWise* educational signage and fact sheets and has been designed so workshops and tours can be run to educate and empower the community on creating their on *FireWise* homes and gardens.



BANJUP FIRE STATION

The multi million dollar upgrade of the Banjup Fire Station gave the City of Cockburn the perfect opportunity to engage the Forever Project to design and install WA's first *FireWise* Demo garden at a Community Fire Station. The landscape features 4 of the most popular garden themes in Australia, all created with *FireWise* plants and a suite of locally produced recycled construction and demolition waste as the mulch and path mediums. The site includes educational signage and will feature in house proposed training and education activities by The City and DFES. As such it is a world class example of what can be achieved at such an important community asset.



BEFORE Garden at installation Dec 2019



AFTER Garden at 9 months

ROLEYSTONE HALL

The City of Armadale had a grand plan to help its 'at risk' rate payers living in the forested areas of the Armadale hills. After discussions with The Forever Project an innovative program was developed that included a full day *FireWise* Expo at the local Roleystone hall culminating in the live installation of a demo *FireWise* garden for the participants. Like all of our *FireWise* installations we demonstrated how a *FireWise* landscape, if carefully designed and installed, can be waterwise and wastewise and feature a suite of *FireWise* components such as metal sculptures, gabion baskets and rockeries. This has proven to be an important educational asset for the locals as they seek to make their homes and gardens more *FireWise*.



After completion...



1 year on...



ACKNOWLEDGEMENTS



Industry Sponsors



Government Sponsors



NGO Partnerships



Media Partnerships



Academic Partnerships

